

Colour Quartz<sup>™</sup> are UV stable and hard wearing granules that can be used to provide a slip resistance with epoxy, polyaspartic or polyurea floor coatings. With a large variety of colours and its vibrancy makes it perfect for use as a coloured decorative component. Colour Quartz<sup>™</sup> is the most versatile granule additive in the epoxy flooring industry that is generally combined used in commercial, industrial and residential environments.

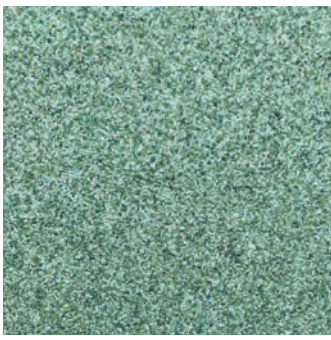
#### APPLICATIONS / ENVIRONMENTS

- Auto Dealerships
- Basements
- Butcher Shops
- Cafeterias
- Commercial Kitchens
- Dog Kennels
- Food Processing Plants
- Industrial Hallways
- Pet Stores
- Pool Decks
- Public Municipalities
- Restrooms
- Schools
- Stadium Hallways
- Zoos
- And more...

#### FEATURES & ADVANTAGES

- Superior colourfastness / UV stability
- Extreme abrasion resistance
- Excellent chemical resistance
- Vibrant colours
- Optimal size & shape uniformity
- Perfect for heavy-duty environments
- Outstanding slip-resistance qualities
- Customisable to complement any décor





Aloe



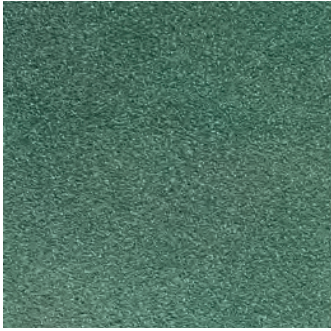
Black Orchid



Blue Hydrangea



Bush Red



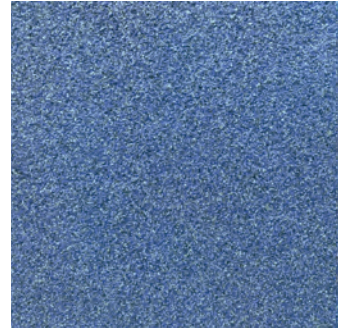
Fiddle Fig



Fossil



Hibiscus



Humming Bird



Impala Black



Merigold



Mustard



Pinecone



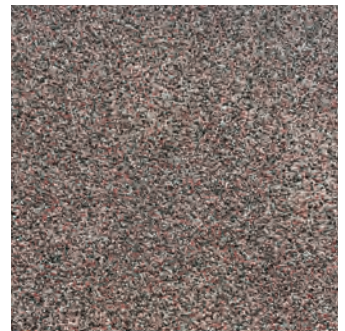
Poppy Seed



White Sage



Blue Sapphire



Red Rock

Penetrating Sealers | Densifiers | Epoxy Coatings | Metallic Epoxy | Urethane Coatings | Water Based Epoxy | Polyaspartic  
Graffiti Protection | Polyurea | Specialty Coatings | Decorative Flakes | Quartz Granules | Anti-Slip Additives & Media



COLOUR  
QUARTZ™

Ph: 1300 800 054

info@ durableconcreteteatings.com.au

www.durableconcreteteatings.com.au

